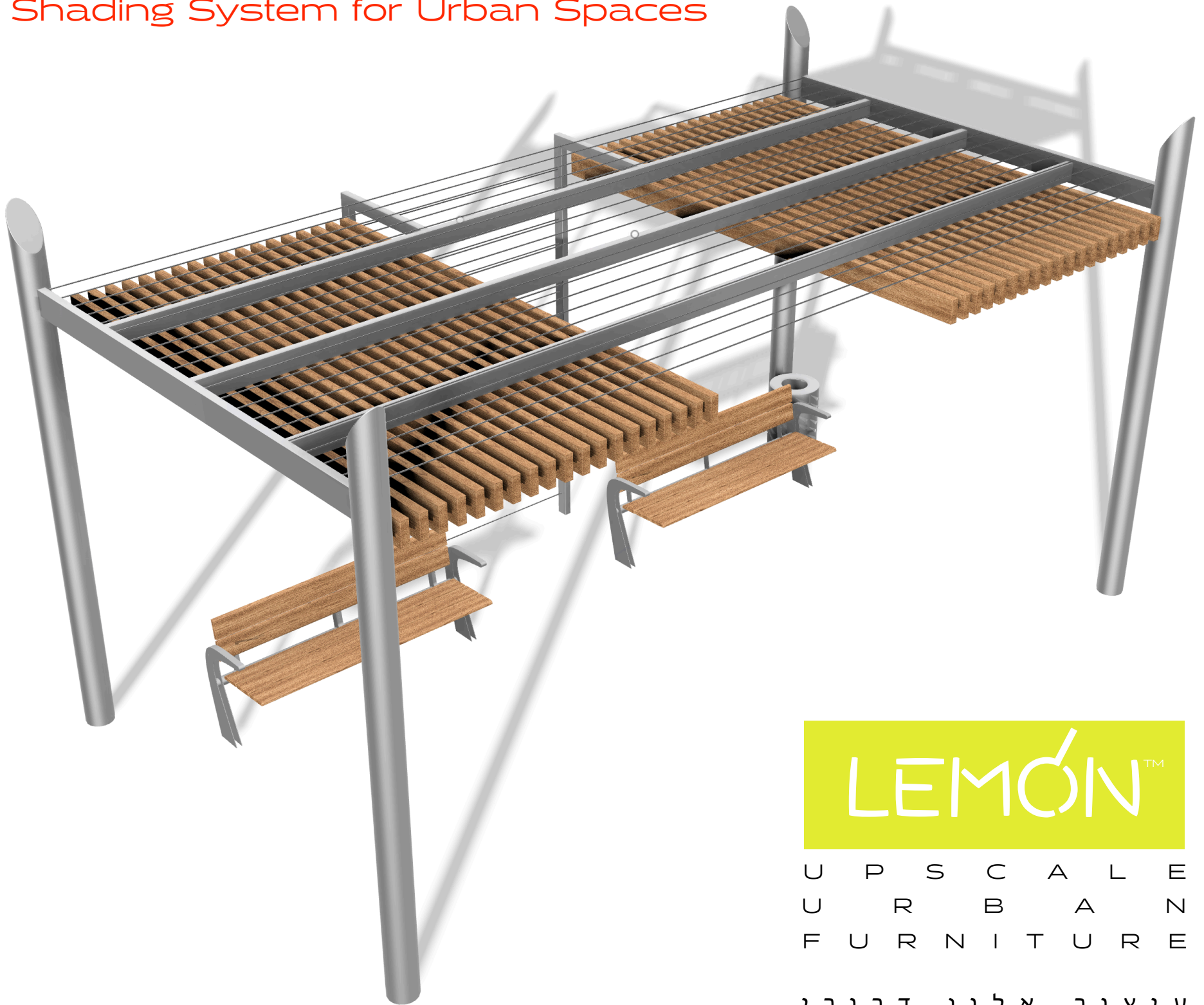


MultiShade

Shading System for Urban Spaces



LEMÓN™

U P S C A L E
U R B A N
F U R N I T U R E

עיצוב אלון דרורי

w w w . l e m o n - c o l l e c t i o n . c o m

I N N O V A T I O N I N T H E P U B L I C S P A C E

רִיחוּט אורבני ייחודי

MultiShade

Shading System for Urban Spaces

MultiShade is an elegant shading system for urban public spaces and garden environments. The system uses simple clean lines and made of high quality materials.

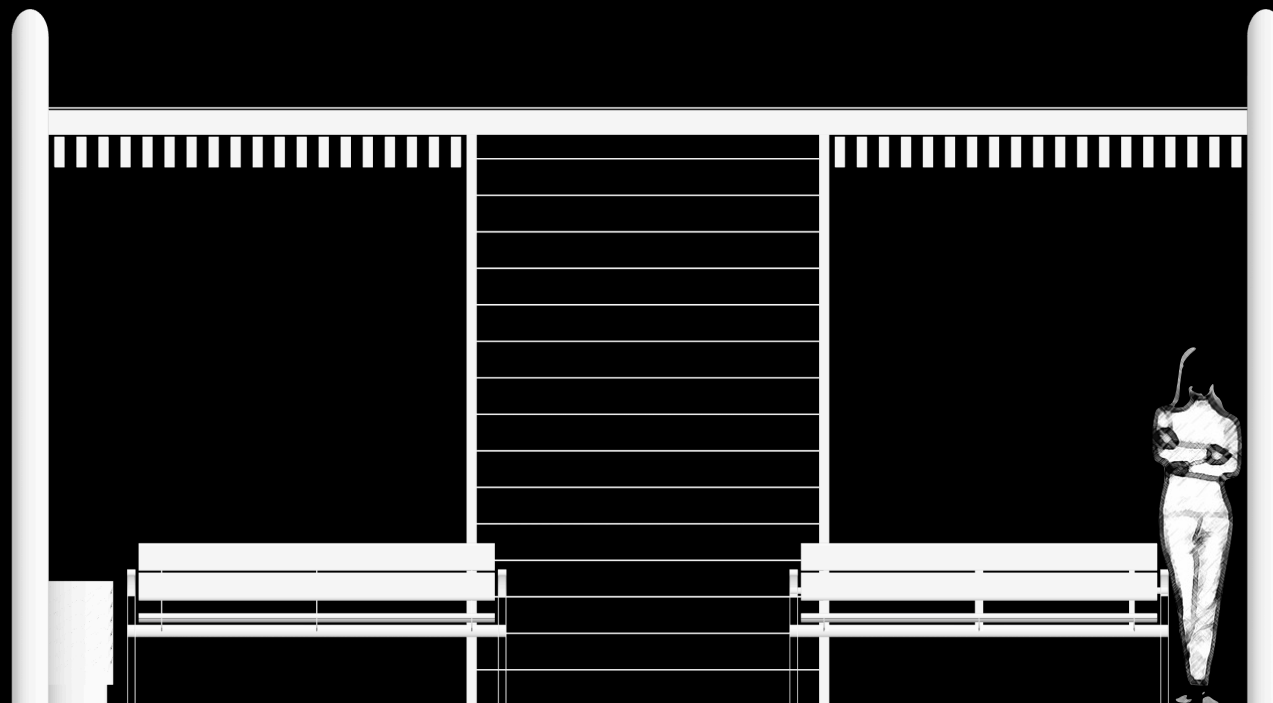


Design by LEMON

MultiShade

Shading System for Urban Spaces

T 1



Design by LEMON

MultiShade T1

Shading System for Urban Spaces



Design by LEMON

MultiShade T1

Shading System for Urban Spaces

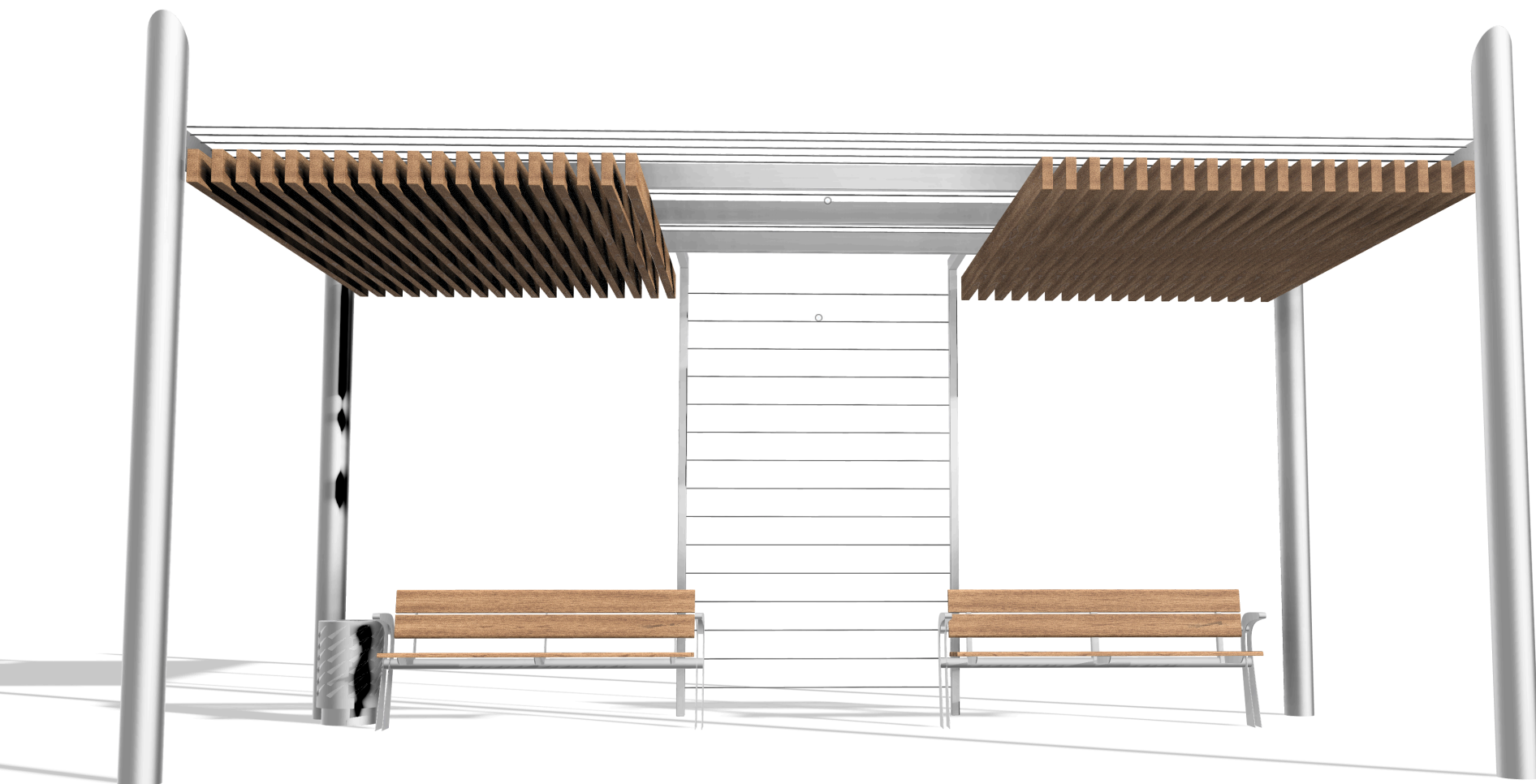


LEMÓN™

Design by LEMON

MultiShade T1

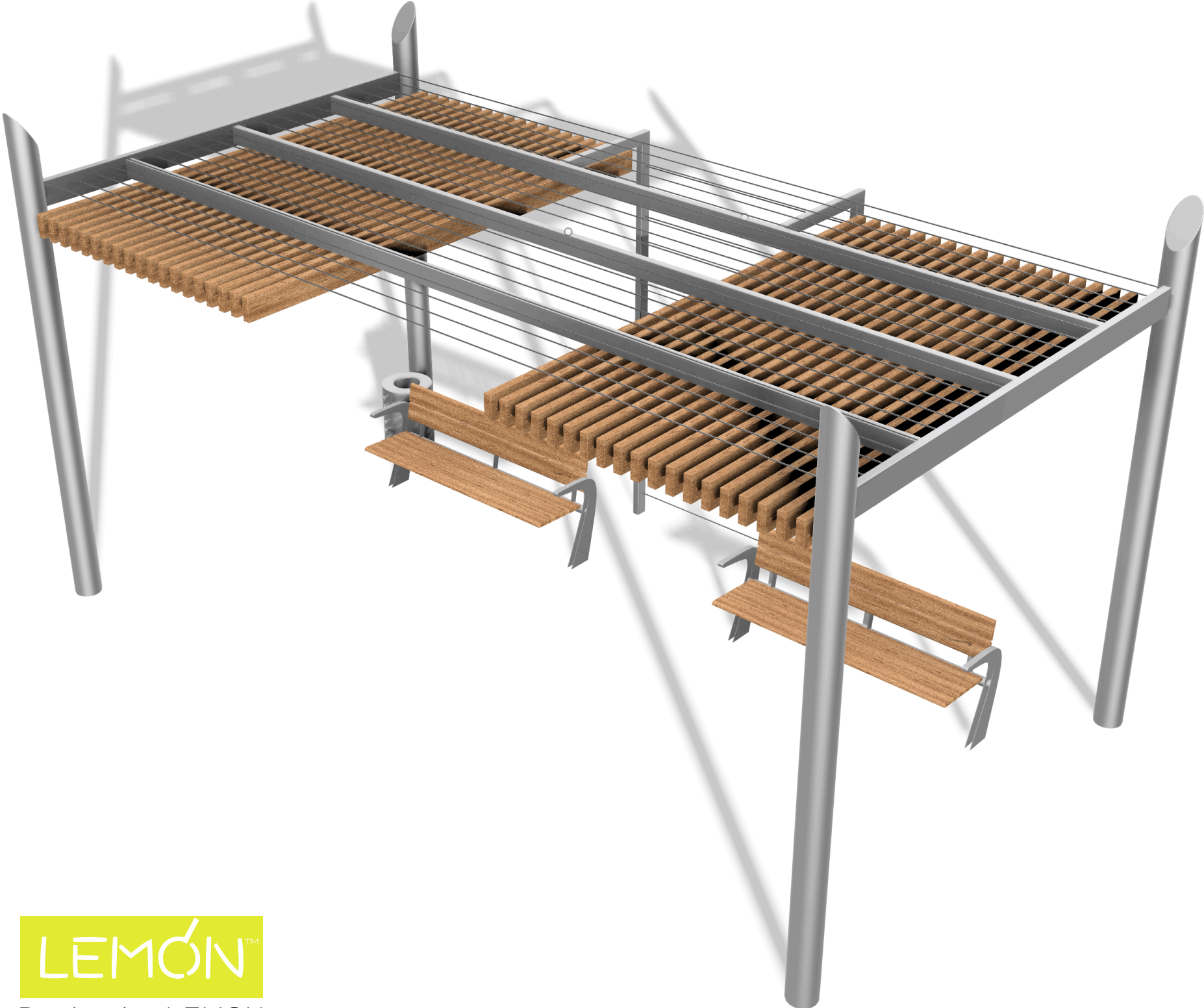
Shading System for Urban Spaces



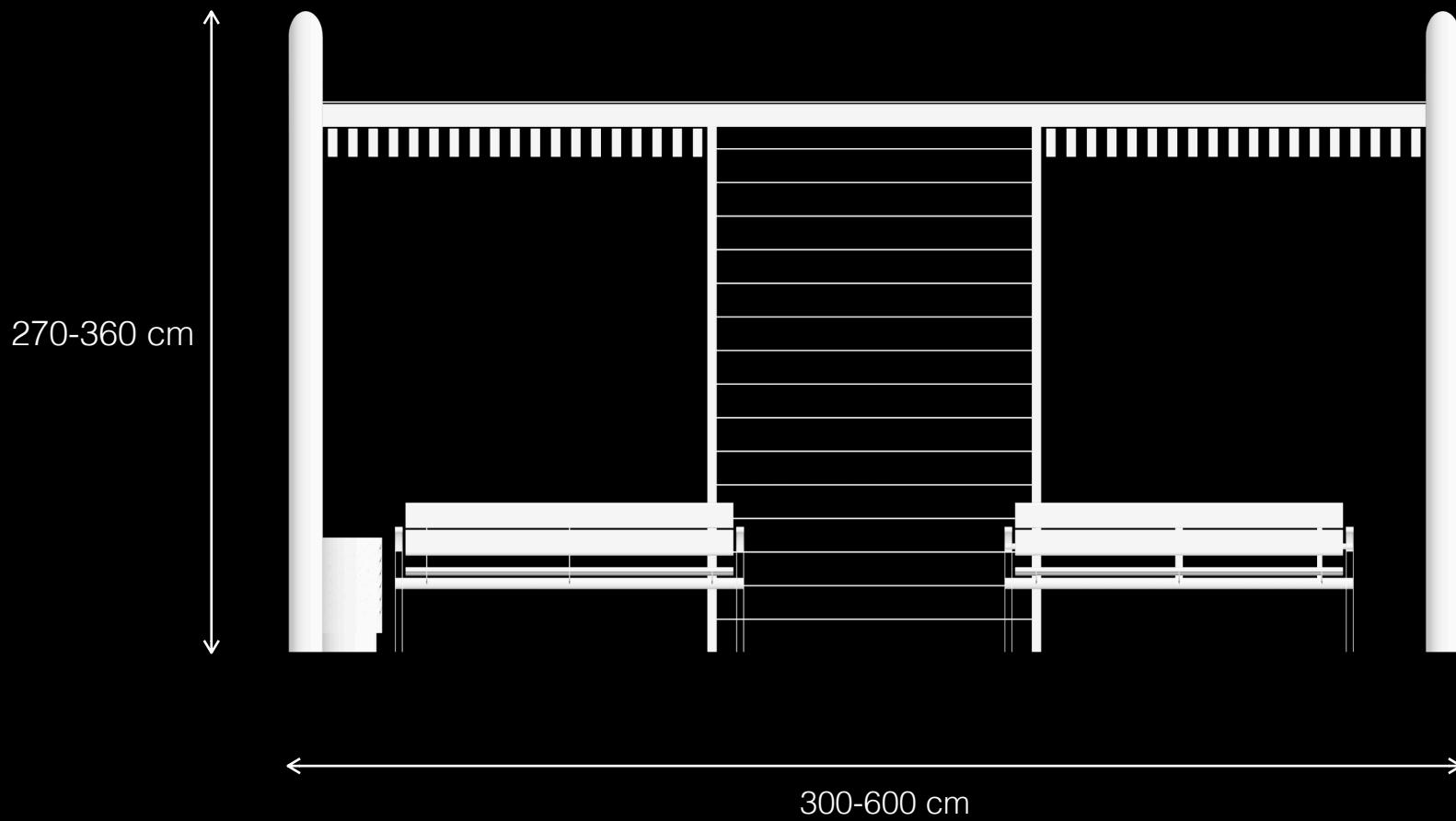
Design by LEMON

MultiShade T1

Shading System for Urban Spaces



Design by LEMON



Materials & Finishes

Structure: Epoxy/Polyester Coated Metal

Shading: Wood

/Anodised Aluminum

/Epoxy/Polyester Coated Metal



U P S C A L E
U R B A N
F U R N I T U R E

LEMON TLV: office@lemon-collection.com

LEMON BARCELONA: oficina@lemon-collection.com